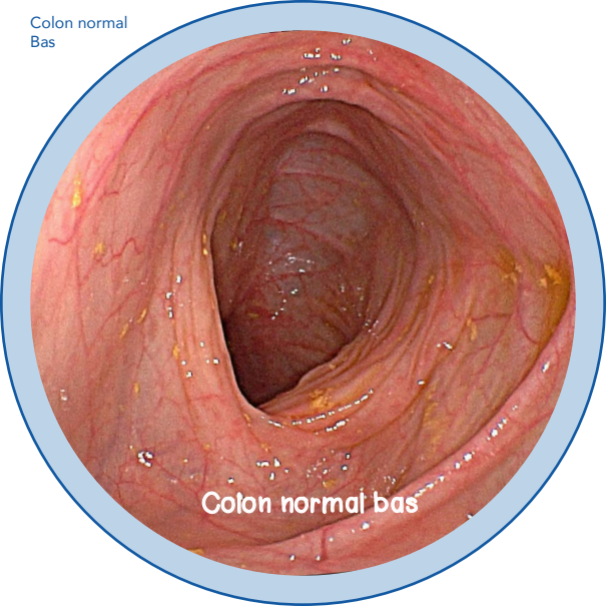
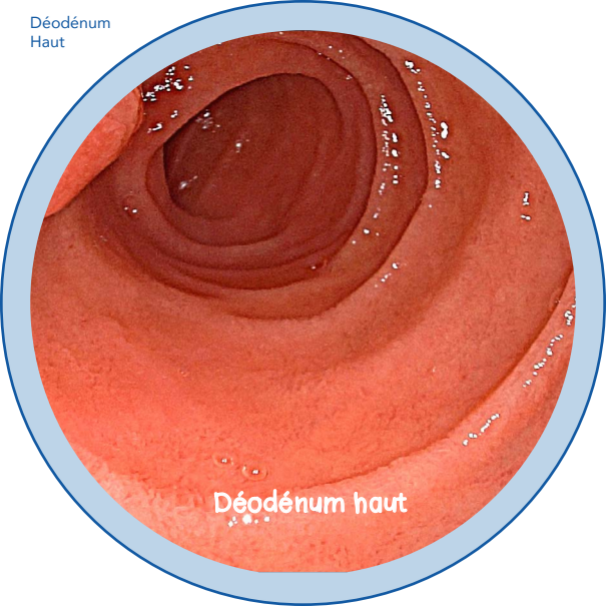


Colon normal  
Bas



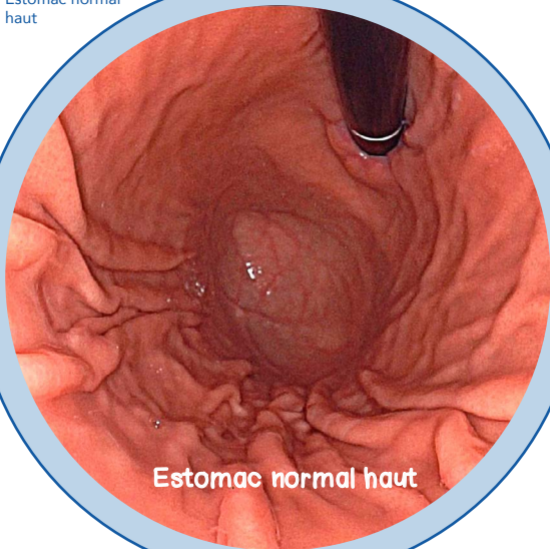
Colon normal bas

Déodénum  
Haut



Déodénum haut

Estomac normal  
haut



Estomac normal  
haut

lléon normal



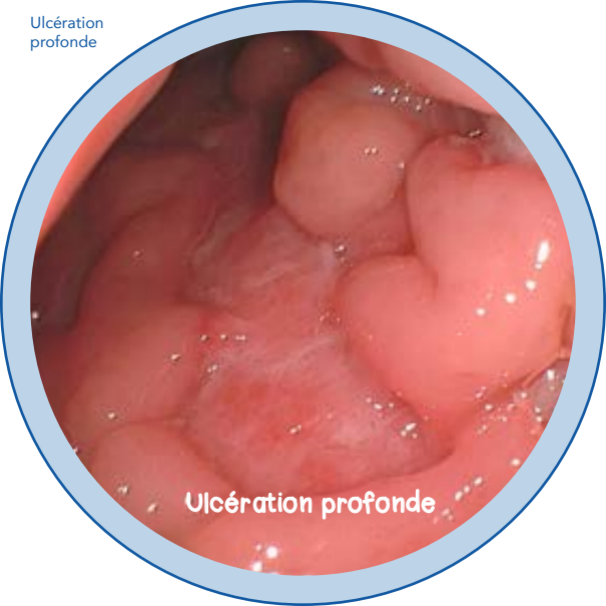
lléon normal

Ulcération  
superficielle



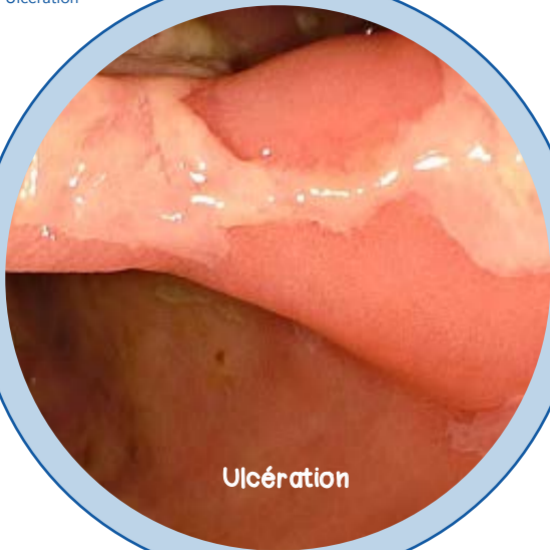
Ulcération superficielle

Ulcération  
profonde



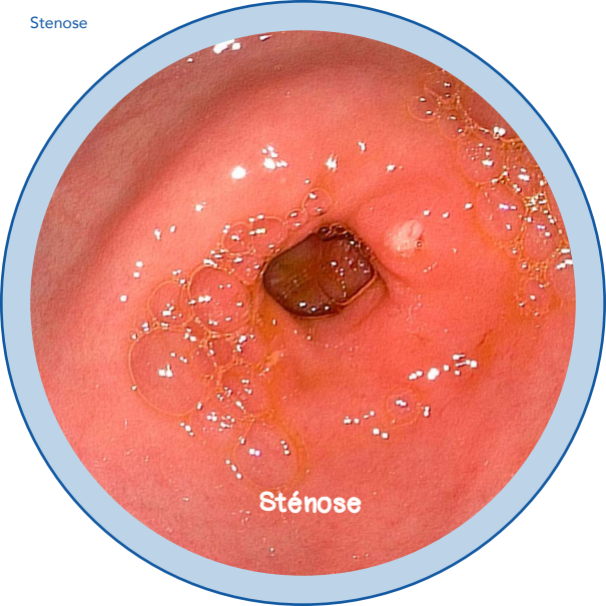
Ulcération profonde

Ulcération



Ulcération

Stenose



Sténose